

# The Belleville Times

OVER  
24,000  
READERS

END YEAR, NO. 1

Entered as second class matter, May 31, 1906, at the Post Office at Newark, N. J., under the act of March 3, 1879.

BELLEVILLE, N. J., THURSDAY, JANUARY 4, 1962

Telephone PLymouth 9-3200

10c Per Copy

## Gruhin Insists No Taxes Due Town On Former Synagogue Property

### Disagreement Arises About Exact Date Of Final Closing Of Sale

There are no back taxes due the town on former synagogue property, now Gruhin-owned, according to Commissioner Robert C. Gruhin. At a County Tax Board hearing last Thursday Gruhin said his wife, owner of the 217-319 Washington Avenue property, did not have full title until Nov. 1, 1961 and therefore should not pay the year's tax bill.

The town has billed Mrs. Pauline E. Gruhin \$2,231 for 1961 taxes on the grounds that she owned the property as of Dec. 1, 1960, the date on the deed.

Gruhin also contended the assessed valuation on the property was too high in comparison with the \$14,000 purchase price.

The complaint filed by the town also seeks six months back taxes from Congregation Ahavath Achim, former owners of the property. Synagogue officials argued the bill was attempting to prove the building was used for religious purposes during the six-month period from June to December 1960.

**NO EXACT DATE**  
Officials from the congregation who testified at the three and one half hour hearing could not give the exact date of the closing of the sale. Jack Orlinski, president, said the title was closed on Oct. 5 after a payment of

(Continued On Page 4)

## New Buildings At Clara Maass Are Tax-Exempt

Two new nurses buildings at Clara Maass Memorial Hospital were declared tax-exempt last week by the Essex County Tax Board. The buildings, completed last fall, were built for the final quarter of 1967 on the grounds that they were income-producing.

The hospital receives tuition and rent from the nurses school and the graduate nurses' residence. The tax board, however, ruled the buildings were necessary for the hospital to perform its services.

The hospital does pay taxes on 9.5 of its 14.5 acres of land. By law, only five acres are tax-exempt. The buildings are not taxed by the town.

## Post 105 Leads County

Belleville Post 105, The American Legion, led all Essex County posts in membership for the year 1961. John Kay is chairman of the membership committee.

## Firms Reserve Booths Now For Cavalcade Of Progress

Nineteen booths have been reserved for the Chamber of Commerce 1962 Cavalcade of Progress, according to James Devaney, chairman. There will be 45 booths in this year's cavalcade, which will be held at the Belleville Hotel.

The cavalcade brochure on the event will be sent to local businesses and industries early this month, said Devaney. Former exhibitors and members were given the opportunity to make first selection of booths before the brochure opened the cavalcade to 600 persons more.

Already received are reservations from Karl's for two booths, Julie's Nursery and Garden Center, Jolly Cleaners, Belleville Times - News, Belleville Travel Service, Clara Maass Memorial Hospital, Parvo Brothers Furniture Co. for four booths, Kondrek Studios, Peoples National Bank and Trust Co., New Jersey Bell Telephone Co., De Witt Savings and Loan Association, Elks Lodge Union Trust Co., De Haco Sport Center, Muscara Music and J. Heller and Sons.

**CAVALCADE COMMITTEES**  
Working with Devaney are members of the following committees. For promotion are Edward Bonnel of the Belleville Times, William McDowell of McDowell and McKevoy, John Kondrek of Kondrek Studios and Harvey Kramer of Harvey Kramer Insurance.

Members of the industrial booths committee are C. Robert Horsfield of New Jersey Bell

James Devaney  
ville Roller Rink on May 3, 4 and 5.

Reservations have been made by some of last year's exhibitors, as well as some members of the Chamber who are new to

## Town Court Clerk Needed; Tedesco Can't Hold Two Jobs

Charles B. Tedesco, administrative clerk for the department of Public Safety and municipal court clerk, must give up his court position Feb. 1 after a ruling by the Supreme Court of New Jersey forbidding court clerk duties from being conducted by persons within the police department.

The court ruling, effective throughout New Jersey on Jan. 1, was appealed by Commissioner Harry J. Sullivan, director of the safety department. When the appeal was denied Sullivan requested a three-month extension. An extension until February was granted. The ruling also affects Patrolman Joseph Matera, court stenographer.

Tedesco, a lawyer, has been court clerk for the past 14 years. He has been performing the duties of both court clerk and administrative clerk as part of his regular job, estimating the two composed a \$5 to 60 hour work week. "I spent about 15 hours on court clerk duties each week," he said.

An annual salary of \$8,418 is carried by the administrative clerk position. As court clerk, Tedesco said he received no extra pay, although he was given a \$5 a month car allowance. This payment he said would be stopped.

**WAGE BASE \$5,500**  
Based on budgets of adjoining communities, Sullivan said the

(Continued On Page 3)

## AND THEY START YOUNG TOO

## Auction Bargain Bidders Buy Eleven Bikes For \$20



**FOR 50 CENTS** — Frank Faggiano, 6, of 11 Memphis Avenue flashes a winning smile after his bid got him a two-wheeler bicycle at the auction held at Town Hall Friday. Thomas J. McLaughlin, purchasing agent, holds Frank's new possession. "I'm going to learn to ride a two-wheeler," Frank said after he bid for the bike, "but I wish it had training wheels

on it." Arnold Capriglione, right, and Jimmy Mannion, look on. The two partners bought three bikes for a total bill of \$1.90. They say they are going to repair the bikes, sell them, "And then split the profit."

All bikes up for auction by the town had been unclaimed for six months.

## County Recount Of Referendum Votes Called

Thirteen persons from the Citizens Tax Council have demanded a recount of votes of the Dec. 21 school building referendum. A recount by the County Board of Election was set for next Thursday.

A complaint was filed by the group with the Superior Court alleging there was reason to believe an error had been made in counting and declaring the votes. Petitioners said they based their complaint on information by workers in voting districts that totals were different from those reported. Salvatore Calabro, president of the group, also said he considered this standard procedure in a close election.

A new high school and additions to Schools One and Four were approved in the referendum by a vote of 2,438 to 2,857 — a margin of 81 votes.

"I'm content to let the recount be taken," said Max N. Schwartz, counsel to the Board of Education. "It will demonstrate that the total correctly reflects the votes cast."

(Continued On Page 3)

## Deadline Today For School Petitions; Ten Now In Race

### Albertine Says Qualified Board Imperative Now

Michael V. Albertine, vice president of the Board of Education said this week the success of the high school referendum added incentive to his decision to seek another term.

Albertine said in a statement: "With the school situation presenting so many challenges, it is imperative that school board members have the maturity that comes with experience. Another prerequisite is an open mind with which to analyze a problem and reach a fair solution. It is equally important for school board members to have a sincere belief in and a willingness to work for the highest degree of public education which our community can demand and afford."

The Belleville school system has taken a step forward. The success of the recent referendum has given me renewed incentive to meet the future challenges of our school improvement program. I would like to continue to contribute my time and experience to realize the long-sought dream of our educators — the best in education for our children."

### Sullivan Directs March of Dimes For Fifth Year

"The primary campaign target of the 1962 March of Dimes will be to raise additional funds immediately to support the Birth Defects Special Treatment Center to be located in Babies' Unit, United Hospitals of Newark," Commissioner Harry J. Sullivan, Director of Public Safety, said this week.

Commissioner Sullivan's statement was made as he accepted appointment to direct the March of Dimes campaign in Belleville from Jan. 2 through 31.

The appointment was announced by Joseph A. Glennon, Jr., of East Orange, Essex County March of Dimes campaign chairman.

Sullivan, who begins his fifth

(Continued On Page 2)

### Nurses Get Extra Training In Care Of Handicapped

A pilot program for student nurses to supplement their training in the care of physically handicapped children was launched yesterday at the Cerebral Palsy School and Treatment Center here. Center staff members were discussion leaders in the day-long orientation session for seven senior students from Clara Maass Memorial Hospital.

Highlight of the two-month program will be the assignment of each student to a particular child to enable a complete picture of the youngster's total needs. The student will arrange her schedule to include observation of the child in the classroom and in therapy, keeping a log to record progress.

**FAMILY BACKGROUND**  
To acquaint the student nurse with the whole child, family background will be emphasized through visits to the home with the Visiting Nurse Association.

(Continued On Page 2)

### Double Map Page Prize Sparks Week's Contest

The map page contest starts the new year with a double prize. Ten dollars will be awarded to the first person making the correct identification by mail or in person at The Times office. There was no winner last week, so the prize is carried over to this week.

Take a good look at the map page, come in and make your guess and have a chance at the double prize.

(Continued On Page 3)

### DiRuggiero Lists Ways He Aided Better Schools

Dr. Frank DiRuggiero, seeking his third term on the Board of Education, cited this week improvements he aided in the Belleville school system.

In a statement he said: "Completing six years on the Board of Education, I am grateful to the people for giving me the opportunity to serve them. As a busy professional man, the long hours of service in various Board of Education meetings has meant considerable personal sacrifice. I believe, however, that every citizen should expect to give of some of his time, energy, and ability for the common welfare."

"Most important to Belleville is the school building program approved in the Dec. 21 referendum. During my presidency of the Board of Education the Rutgers Report on our schools was issued and a committee of 100 was appointed to study it and to make recommendations. From this grew the Citizens School Building Advisory Committee and adoption of the building program. Naturally, I am eager to continue to share in the fulfillment of this program for better schools."

(Continued On Page 2)

### Lally Says He Stands on Record Of Past 3 Years

Dominic A. Lally, president of the Belleville Board of Education announced this week his candidacy for re-election to the board.

Pointing to his three years of service on the board Lally said, "I am offering my candidacy to the voters of Belleville in the belief that my past three years of service, the last as president of the board, have given to me an unusually rich experience in the problems which vitally affect our children and our taxpayers."

"Using this three years of experience as a basis, I believe, if elected, I can make an even greater contribution to the welfare of our school children."

"I seek the high honor of continuing to serve my community, its taxpayers and our children. I trust my candidacy will be favorably received by a majority of voters."

Lally is a mathematics teacher at Middlesex County Vocational and Technical High School, New Brunswick. He holds degrees from Newark State and Montclair State Colleges; B.S. and M.A. in Administration and Supervision for secondary and

(Continued On Page 2)

### Incumbents Vie With Two Slates Of Candidates

A.B.C. And Tax Council Propose Tickets For Feb. Election To Board

As deadline approached for filing candidacy petitions, ten persons had announced they would run for three Board of Education seats in the February election. Deadline for filing applications is this afternoon at 6 o'clock.

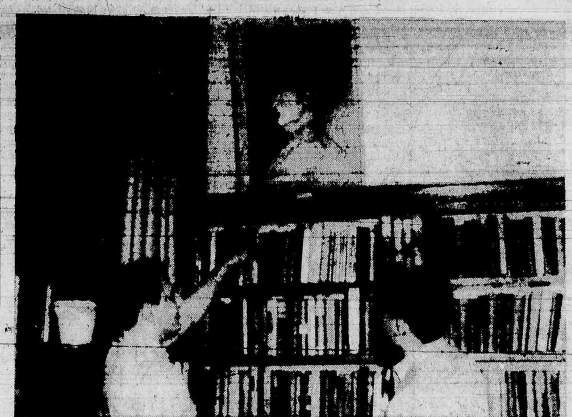
The incumbents, Dominic A. Lally, president of the board, Michael V. Albertine and Dr. Frank W. DiRuggiero have announced their candidacies. Lally's decision came this week. Albertine and DiRuggiero both made their plans known after the high school referendum Dec. 21.

The three will vie for seats with two slates of candidates. The Alert Belleville Citizens, a group formerly known as the Aroused Belleville Citizens, announced their candidacies after a meeting last Tuesday night. George H. Brown of 28 Reservoir Place, John B. Di Rienzo of 161 Birchwood Drive and Calvin Peck of 10 Malone Avenue compose the ticket.

The Citizens Tax Council, outspoken opponents of the school

(Continued On Page 2)

## From Printed Pages To Paintings-- Library Visitors Have Eye Variety



"I LIKE THAT ONE" — Danny Carnvale of 646 Mill Street says, pointing to the "Portrait of Irma Butler," by Manet. "I guess I just like ladies," he explains. On canvas though, his friend, Rich Puleo of 30 Fairway Avenue, prefers landscapes,

such as Monet's "Tulips in Holland." The two paintings are part of a collection of 50 prints now on display at the Public Library. Reservations are being accepted now for the prints, which will begin circulating Monday, Jan. 8.

## Town Adopts 3 Month Budget

Belleville's Town Commission approved a temporary budget yesterday in finance operating expenses for the first three months of 1962, until the permanent budget is adopted.

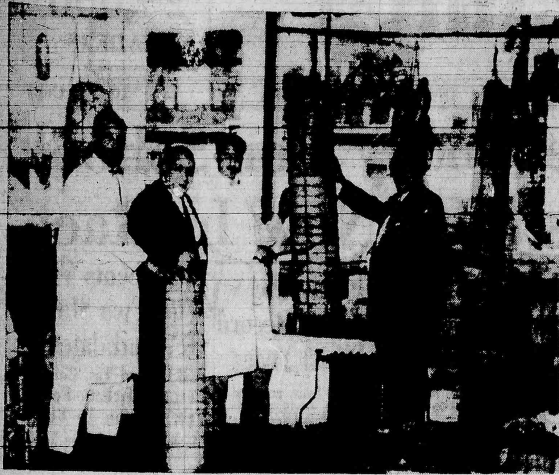
The official budget must be approved by March 10 and adopted by March 20. Basically the temporary budget is 28 per cent of last year's permanent budget. Funds for the separate departments for the next three months were: \$75,800.00 for Public Affairs, \$85,900.00 for Public Works, \$264,412.50 for Public Safety, \$51,648.62 for Parks and Public Property and \$87,475.00 for Revenue and Finance.

## BOARD OF EDUCATION SPECIAL MEETING FRI.

The Board of Education will hold a special meeting Friday at 8 p.m. to adopt a tentative budget for advertising purposes and set a date for a public hearing on the budget. Drawing for positions on the February school board ballot will take place at the beginning of the meeting.



# The Biggest In New Jersey?



AND ALL FOUR ARE IN BELLEVILLE—Pictured with what are believed to be the four biggest provolones in New Jersey are, from the left, Vincent Strumolo, supporting provolone; Gerald J. Spatola, holding provolone; Anthony Strumolo, cutting provolone; Anthony "speed" DeBenedictis, leaning on provolone. The

## Ralph Visco Firm Joins State Engineering Group

Ralph Visco of Belleville is one of eight consulting engineering firms that have joined the New Jersey Association of Consulting Engineers this fall. Donald R. Goodkind, president, announced.

According to Goodkind, the firms are located in areas of the state not previously represented and include many of the engineering specialties. The Visco company specializes in plumbing, heating and air conditioning.

The association, founded in 1958, now numbers more than 30 members with offices throughout New Jersey, specializing in all of the major phases of consulting engineering. A directory of all members is being planned for publication in December, 1961 with a distribution of 5000 to municipal engineers, architects, contractors, and school, development, planning and housing boards in New Jersey.

## Map Page

(Continued From Page 1)

Turn to the map page in today's issue and note the feature picture.

One of the persons in the photo is singled out with a circle.

Readers are invited to identify this person and the spot where the picture was taken. The first one to do so—by mail or in person at the office of The Times—

**EAST NUTLEY GARAGE**  
C. A. FANELLI, Prop.  
Body and Fender Repairing  
Expert Auto Repairing  
Phone NO 7-0608  
33 Washington Avenue,  
Nutley, N. J.

WE DO ROOFING  
WATERPROOFING  
LEADERS  
GUTTERS

**COURTNEY CONSTRUCTION CO.**  
476 WASHINGTON AVE. BELLEVILLE, N. J.  
Office: PLYMOUTH 1-2640 Home: PL 9-4504

**Modernize Your Bathroom**

As tired of your old fashioned bathroom? Let me design or remodel your present bathroom or kitchen to look like a showplace. I will renovate the job completely, including plumbing, carpentry, tile, etc.

Easy Financing Arranged.

FREE ESTIMATES

**DI GANGI TILE CO.**  
PL 9-4489

Foundation was the first in the country to organize a treatment center for arthritis under The Foundation's program announced in 1958," Mr. Johnstone said.

"This is the March Dimes Juvenile Arthritis Special Treatment Center, under the direction of Dr. John Calabro, at Seton Hall Medical College. What began as a small pilot study has grown, in three short years, into a center of major national significance.

"This year, again, Essex County is in the vanguard with the approval of a similar treatment center specializing in the field of congenital birth defects, to be located at Babies' Hospital, Newark, where it will be of great benefit to the people of this area," concluded Johnstone.

## DiRuggiero

(Continued From Page 1)

"My record on the Board of Education has been one of support for many positive improvements in our schools: corrective speech classes, remedial reading programs, the summer school, introduction of the Italian language into the high school curriculum, curriculum improvement, special education classes, unit control of school administration, renovation of school buildings, improved care of school grounds, better salaries to hire and retain teachers, custodians, secretaries, clerks, supervisory and administrative personnel, custodians, and maintenance employees.

**MAXIMUM EDUCATION**

"In all this, it has been my purpose to get the maximum in good education for every tax dollar. Those who preach economy will find that economy has been really practiced in Belleville. Of the 20 school districts in Essex County, Belleville ranks fifth lowest in per pupil cost of education and fourth lowest in the percent of the tax rate required for schools. In the design of the new high school, economy has prevailed without sacrificing educational quality.

"On my record on the Board of Education, I ask the support of all voters interested in good schools."

## Lally

(Continued From Page 1)

vocational schools. He attended New York University School of Engineering and Rutgers University Graduate School of Education.

He is a member of the Bricklayers and Plasterers International Union A.F. of L., Local 3, Newark. He belongs to the International Honorary Society for Vocational and Industrial Arts, New Jersey Education Association, St. Anthony's Holy Name Society and Knights of Columbus, Council 835 in Belleville.

He served as chairman of the United Fund of Belleville in 1960 and is present in a trustee of the fund. He also was chairman of

## WASHINGTON TV

40 WASHINGTON AVE.  
BELLEVILLE, N. J.  
Repairs on All Makes Radio & Television  
For SERVICE Call  
**PL 1-2107**  
HOURS: MON. - SAT. 9 A.M. - 9 P.M.

Here's all you need to install an Armstrong Ceiling . . .

<b>FURRING STRIPS</b> Top grade 1"x3" lumber. You install these first over joists or cracked ceiling, staple or nail them to them.	<b>FREE BOOKLET</b> Gives easy-to-follow instructions. With this illustrated booklet as a guide, anyone can install an Armstrong Ceiling. Shows how to plan, measure, cut, install and finish.	<b>MOLDING</b> A variety of styles to cover joint where the ceiling tile meets the wall. Top grade material.
<b>Use Our Stapling Guns FREE</b> For many people, it's easier to install ceilings by stapling rather than nailing. With your purchase of an Armstrong Ceiling, we'll lend you a stapling gun.	<b>TOOLS</b> HAMMERS CROSSCUT SAWS CARPENTER'S LEVELS CARPENTER'S RULE	<b>Armstrong ACoustical CEILING</b> If your plaster ceiling is sound, you can cement ceiling tile and save bother of installing furring strips. Coverage: 60-70 sq. ft. per gal.

**VIOLA BROS., Inc.**  
180 WASHINGTON AVE., NUTLEY  
Complete Line Of Building Materials  
**CALL NO 7-7000**

sons with experience in industry to insure efficiency in expenditures for the new school, according to Sal Calabro, president, Bernardini is manager of market research for Chicope Mills, New York. Francisco is supervisor of Product Engineering for General Electric. Mrs. McCool

is office manager and bookkeeper for Fischer-Conen Co., Newark. Knowledge in these three areas will be vital during construction of the school, said Calabro.

The tenth candidate is Albert Guglielmini of 75 Lake Street, Guglielmini said he wanted to run School Four for 45 minutes.

NOT IN 2 YEARS  
NOT IN 1 YEAR  
BUT  
**NOW**  
EARN **4**%  
per annum

PAID ON  
EVERY DOLLAR  
SAVINGS AT EACH  
DIVIDEND PERIOD

Yes, the Board of Directors of De Witt Savings has authorized this rate on all regular "save and withdraw at will" accounts . . . in fact, hundreds of De Witt's savers have already earned this total dividend through the medium of De Witt's dividend "extras." Why not join them? Dividends start every month here, and you can save by January 15th and earn this 4% rate from January 1st.

We invite you to open your account here where your savings are insured, protected up to \$10,000 by an agency of the U.S. Government.

**DeWITT SAVINGS**  
AND LOAN ASSOCIATION  
463 Washington Ave., cor. Tappan Ave. BELLEVILLE, N. J. • Plymouth 9-5264  
Daily, 9 to 4; Mon. Even., 6:30 to 8.  
SERVICES: Savings Accounts • Money Orders • Travelers' Checks • Gift Checks • Post-book Loans • Mortgage Loans • Home Improvement Loans • Gas and Electric Bills Collected

**LIGHTING can dramatize your home!**  
...and what a difference it makes. A few well chosen decorator lamps, spots, or properly installed valance lighting give your home a new look, without costly cash outlays for expensive new furniture, decorating or painting. Dramatic lighting brings your drapes and

**A CERTIFIED RESIDENTIAL LIGHTING CONSULTANT CAN BE OF SERVICE IN HELPING YOU PLAN BETTER, MORE EFFECTIVE LIGHTING IN YOUR HOME. CALL YOUR LOCAL PUBLIC SERVICE OFFICE.**

**PUBLIC SERVICE ELECTRIC AND GAS COMPANY**  
TAXPAYING SERVANT OF A GREAT STATE



# The Belleville Times

PAGE THREE THURSDAY, JANUARY 4, 1962

## Golden Comes Up With Another

"Leave it to Jim Golden to discover something for the Prosecutor to investigate—boy! He is really something."

Such is the average comment of the local politicians which greets every request for an investigation of town affairs by Commissioner James Golden. The latest Golden request to Essex County Prosecutor Brendan Byrne involves the work week of employees in Public Works Director Robert Gruhin's department.

According to the departmental records which Golden inspected the Public Works department employees are required to work a 44-hour week. The fact is they don't. Gruhin contends the practice existed long before he took office three and a half years ago and all he, Gruhin, did was to continue the pattern.

It wasn't so long ago that Gruhin's political partner, Mayor Isadore Padula, said of Gruhin, "He is a lawyer whose reputation is known far and wide as honorable. He knows his law..." We will take Padula's word regarding Gruhin's knowledge of the law.

Since Padula and Gruhin are both lawyers—and we are not—we would like to ask them a question—If a practice is illegal does length of time change the legality? Or—in other words Mr. Gruhin—just because you inherited a system which requires employees to work 44 hours but in fact they receive extra pay for hours worked over 40 hours does it mean that you should continue such a system if it is illegal?

The people have a right to know—and fast, too. One calculation indicates the possibility that the town may have overpaid its Public Works employees—over \$50,000. With each passing week the people of Belleville may be paying overtime wages unnecessarily.

As with the Padula - Gruhin synagogue tax-free status, Golden may have some-

thing going for him in this latest disclosure. We await Prosecutor Byrne's report to the people.

## A Healthy Sign

As this issue of The Times-News goes to press we are assured of a contest for the three seats on the Board of Education presently filled by Board President Dominic Lally, Dr. Frank DiRuggiero, and Michael Albertine.

The incumbent members of the board have announced their intention to seek reelection. They will campaign independently and will not be bracketed.

A slate of three candidates is sponsored by the politically active Citizens Tax Council.

A second slate of three candidates is being offered the people by a group led by Mrs. Violet Rochau.

There is a further possibility of still a third bracket entering the field to exploit an Un-American ethnic angle. The purpose of the third slate supporters is said to be an effort to defeat the incumbent three by a special appeal to a major ethnic group in our community. It will be a sad day in Belleville were any citizens organizing simply to achieve an Un-American goal.

In addition to all of the foregoing, many rumors persist that two or more individuals may file independently. So—it looks like a lively Board of Education election. This is a healthy sign. The more legitimate candidacies the better.

## The Belleville Times

Published by the Belleville News Corp.  
ADVERTISING, NEWS AND BUSINESS OFFICE  
246 WASHINGTON AVENUE  
BELLEVILLE, NEW JERSEY  
Frank A. Orechio, Editor and Publisher  
Carmen A. Orechio, Associate Publisher

Jr. Congregation at 10:15 a.m.  
Sunday—Services at 8:30 a.m.  
Mishna Class, 10:30 a.m. Study Group at 8:30 p.m.  
Tuesday—Sisterhood meeting at 8:30 p.m.  
Wednesday—High School group at 3:45 p.m. No Teen group at 7:30 p.m. Parent Institute at 8:30 p.m.  
Thursday—Teen group at 7:30 p.m.

## Wesley Methodist Church

Washington Ave. at Academy St.  
Rev. Frank C. Shannon  
Sunday—Sunday School all ages; 9:30 a.m. - 11 a.m. Worship Service, Nursery Care; 6:30 p.m. Jr. MTF; 7:30 p.m. Sr. MYF.  
Tuesday—8 p.m. Official Board.  
Wednesday—7 p.m. Boy Scouts; 8 p.m. Chancel Choir.  
Thursday—4 p.m. Wesley Choir; 8 p.m. A. A.  
Friday—4 p.m. Epworth Choir.

## Christian & Missionary Alliance

Union and Hancock Aves., Nutley  
Rev. Anthony Guenther, Pastor  
Sunday—4:45 a.m. Family Sunday School hour with classes from Nursery to Adult Bible Group 11 a.m. Worship Hour with Rev. Guenther, 6:30 p.m. Junior and Senior Alliance Youth Fellowship meetings, 7:30 p.m. Son and Praise Service.

## Christian Apostolic Church

77 Wallace Street  
Rev. Joseph Grinnelli, Pastor  
Sunday—9:45 a.m. Worship service in both English and Italian, and Sunday School.

Tuesday—7:30 p.m. Service in English.

## Cong. Ahaath Achim

Belleville Jewish Center,  
125 Academy Street,  
Rabbi Victor Cohen

Friday—Candle Lighting at 4:23 p.m. Services at 8:30 p.m.

Sermon—Lectures—Exodus 6:2-9:25. Host and Hostess for Oneg Shabbat, Mr. and Mrs. Samuel Panansky.

Saturday—Services at 9 a.m.

## WILLIAM V. IRVINE & SON

### MEMORIAL HOME

For more than fifty years it has been our privilege to render personal service and offer friendly counsel to bereaved families. Our service is performed with reverence and dignity and is always within the means of all.

276 Washington Ave. Belleville, N.J.  
Plymouth 9-1114  
William V. Irvine Jr., Director

## Second Baptist Church

Stevens and Academy Street  
Rev. Henderson Goldstein,  
Sunday-10 and 11 a.m. Morning worship service.

## Christ Episcopal Church

382 Washington Avenue  
Rev. Fred Long, Rector  
Sunday-7:30 a.m. Holy Communion, 9:15 family service, 11 morning prayer with sermon.

## Belleville Reformed Church

Main and Englewood Streets,  
Rev. Thomas Ten Hoeve, Minister

Friday—Consistory meeting at 8 p.m.

Saturday—9:30 a.m. instruction Class. Childrens Bible Hour at 10:30 a.m.

Sunday—Church School meets at 9:30 a.m. Worship at 11 a.m. with sermon: "He Leadeth Me." Tuesday—Girl Scouts at 7 p.m. Women's Guild meets at 8 p.m.

Thursday—Choir at 8 p.m.  
Friday—Teachers and Officers at 8 p.m.

## Temple Menorah

304 Broad Street,  
Bloomfield  
Rabbi Nathan Fish

Friday—8:30 p.m. Laymen services.

Saturday—11 a.m. Junior congregation under the direction of Rabbi Fish.

## Grace Baptist Church

Overlook Avenue and  
Bremont Street  
Rev. Albert Lawson, Pastor

Sunday—Church School at 9:45 a.m., with classes for all age levels. Adult Class led by the pastor.

Morning Worship at 11. Sermon by the pastor, Rev. Albert V. Lawson, "Mind Your Business." A nursery is provided for pre-school children during the service. 7 p.m. Baptist Youth Fellowship for senior and junior high age youth.

Give your family the lift of faith by going with them to worship at the church of your choice this Sunday.

## Bethany Church

(Evangelical Lutheran)  
Joralemon and New Streets  
Rev. Robert L. Siegel, Pastor

Sunday—9:30 a.m. Sunday School, 9:45 and 11 a.m. Worship Services; 7:30 p.m. Luther League.

## Temple B'nai Israel

192 Centre Street,  
Nutley  
Rabbi Hyman Danzig

Friday—8:30 p.m. Evening service.

Saturday—9 a.m. Sabbath morning service. Midnight prayer service.

## St. Anthony R. C.

58 Franklin Street  
Rev. Tilian Monegas

Thursday—7, 7:30 and 8 a.m. perpetual Novena and Devotions to Our Lady of the Miraculous Medal and to St. Anthony. Benediction follows.

Friday—Masses tomorrow, at 7, 7:30 and 8 a.m.

Saturday—7, 7:30 and 8 a.m. Mass; 4:30 p.m. Confession, 7:30-9 p.m.

Sunday—Masses in church at 8:30, 9:10 and 10 a.m. and 12 noon. Masses in chapel at 9, 11:05 a.m. and 12 noon. Nine o'clock Mass in church is for children. 2 p.m. Sacrament of Baptism.

Monday—7, 7:30 and 8 a.m. Mass.

## St. Peter's Church

159 William Street  
Rev. Mgr. J. M. Kelly

Thursday—8:30, 1:30 and 8 a.m. Mass 7 p.m. High School Religion and GYO.

Friday—Masses at 6:30, 7:30 and 8 a.m.

Saturday—Masses at 6:30, 7:30 and 8 a.m.

Sunday—6, 7, 8, 9 (children), 10, 11 a.m. and 12 noon Masses in the church and 9:05 and 10:05 a.m. in the new auditorium. Benediction of Most Blessed Sacrament follows 11 o'clock Mass.

Sunday School follows 9 o'clock Children's Mass. 2 p.m. Sacrament of Baptism.

Monday—6:30, 7:30, and 8 a.m. Mass.

Tuesday—6:30, 7:30 and 8:30 a.m. Mass.

Wednesday—6:30, 7:30 and 8 a.m. Mass.

## Belleville Assembly Of God

174-178 Holmes Street  
Rev. Anthony DiQuattro, Pastor

Sunday—9:45 a.m. Sunday School; 10:45 a.m. Morning Worship.

## Silver Lake Baptist Church

166 Franklin Street  
Rev. B. Pascale, Pastor

Sunday—10 a.m. Bible school for all ages, 11 a.m. Morning Worship Service, 4:30 p.m. Youth Service.

Wednesday—7 p.m. High School Choir rehearsal.

Friday—3:30 p.m. Junior Choir rehearsal, 8 p.m. Senior Choir rehearsal.

## Little Zion, U.A.M.E.

154 Stephen Street  
Rev. Mary A. Farrar, Pastor

Sunday—11 a.m. Worship Service.

## Beck's Column



We wrote in recent columns about the beginning of TV 15 years ago. The stations had weak transmitters at that time. They were scattered all over New York. In many cases one station had to have several antennas in order to receive the different stations. At one time channel 13, which temporarily is off the air now, has its transmitter in West Orange and one had to install a separate small antenna with a second lead-in wire and a switch in back of the set. Some people installed motors which turned the antenna in any direction.

The most commonly used antenna types were the straight or the folded dipole with a reflector. Many changes in antenna design have taken place in the meantime. The stations have increased their transmitting power, sets have become much stronger, and still we need an outside antenna, if we want to have the best available reception. The signal strength is more than sufficient in most parts of this vicinity. Still we are troubled with "ghosts." What causes a ghost? It is caused by a reflected signal.

The ideal situation is to receive a strong signal from the transmitting antenna. This will give a good, clear picture, free of wiggles and shimmy. Such a signal hits our antenna, but it also travels right on. We have the so-called "mountain ridge" in back of us. The signal from the transmitter is reflected by this ridge and hits our antenna a second time, from the back, and creates a second picture, next to the first one received directly from the transmitter. The main purpose of the elaborate antenna which you see more often on roofs, is to prevent the reflected signal from reaching our antenna again and prevent the creation of a second signal, a "GHOST."

We service what we sell.

BECK'S RADIO TV  
-HI FI ORGANS

Nutley North 7-2275

## County

(Continued From Page 1)

The tax council has campaigned vigorously against a new high school. The group filed charges against the Board of Education alleging misuse of public funds and use of school children to distribute materials before the first referendum, which was defeated Oct. 17. The charges have not yet been heard by the state because of postponements requested by the council. The group then attempted to get a court injunction to postpone the second referendum until after the hearing. Judge Nelson K. Mintz said he "was not impressed at all" with the council's case and denied the request. He called the move "speculatively timed."

Two of the petitioners demanding the recount are candidates for the Board of Education on a tax council slate. Paul F. Bernhardt of 182 Forest Street and Paul Francisco of 24 Crestwood Avenue were among the 13 signers. Others were Mrs. Bernhardt, Mrs. Phyllis Calabro of 76 Fair-

way Avenue, wife of Sal Calabro, president of the tax council; Daniel Merola of 528 Joralemon Street, Martin L. Resnick of 160 Bremont Street, Lee Garson and Marijane Garson of 14 Joralemon Street, Florence and John O'Neill of 378 Greylock Parkway, Joseph Insera of 34 Maier Street and Thomas F. and Mildred F. McGill of 12 Forest Street.

## Court Clerk

(Continued From Page 1)

single post of court clerk paid \$3,500 to \$4,900 in four steps. The job of clerk stenographer paid \$2,900 to \$4,100 in four steps. Patrolman Matera receives \$6,100 as a policeman.

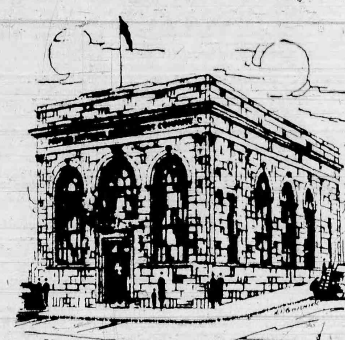
Sullivan said he fought the ruling, pointing out the added expense new posts would require. Some adjustments would have to be made with the present salaries and working hours, he said. He added, "We haven't yet determined what it will be."

"What we were arguing," Sullivan explained, "is that one man

## Post 299 Plays Santa Claus

Joseph A. Marra Jr. and Mrs. John DiMaso distributed one hundred toys on behalf of the Joseph J. Carbat Post 299. The American Legion and Ladies Auxiliary to children at St. Anthony's Orphanage, North Arlington. Recipients were chosen from letters to Santa Claus they had written. Gifts were donated by the post and the auxiliary.

Marra, the chairman, played Santa. He was escorted by Patrolman John Marano of the Belleville Police Department, who helped distribute gifts.



## Peoples National Bank and Trust Company

### STATEMENT OF CONDITION RESOURCES As of December 29, 1961

#### RESOURCES

Cash and Due from Banks	\$ 2,796,753.29
U.S. Government Securities	7,257,218.28
State, County, & Municipal Bonds	2,934,151.78
Federal Reserve Bank Stock	37,500.00
First Mortgage Loans	2,800,313.78
Government Guaranteed or Insured Loans	889,370.26
Loans on Collateral	1,244,156.26
Installment Loans	2,663,329.73
Other Loans and Discounts	986,829.57
Bank Building, Fixtures, & Parking Lot	94,120.15
Interest Due us and Prepaid	90,256.39
Accounts	\$21,793,999.49

#### LIABILITIES

Deposits	\$19,765,654.12
Unearned Discount	412,974.43
Accrued for Interest, Income Taxes, Dividends, Etc.	151,806.83
Capital, Surplus, Undivided Profits and Reserves	1,463,564.11
TOTAL	\$21,793,999.49

#### OFFICERS

B. Thomas Aitken, Chairman of the Board and President  
Albert P. Luscombe, Chairman of the Executive Committee and Executive Vice President  
Othmar B. Bart, Vice Chairman of the Board  
Frank J. Bolen, Cashier and Trust Officer  
Edward K. Albreten, Assistant Cashier and Assistant Trust Officer  
Robert M. Kennedy, Assistant Cashier  
Sigmund E. Swiderski, Assistant Cashier  
Louis D. Ventura, Assistant Cashier

#### DIRECTORS

B. Thomas Aitken  
Chairman of the Board and President  
Othmar B. Bart  
Vice Chairman of the Board  
President, Paterson Brass Mfg. Co., Inc.  
Frank J. Bolen  
Cashier and Trust Officer  
Albert P. Luscombe  
Chairman of the Executive Committee and Executive Vice President  
Ray D. Post  
President, J. Frank Post, Inc.  
Charles A. Gebb, Jr.

## PEOPLES NATIONAL BANK AND TRUST COMPANY

257 WASHINGTON AVENUE

BELLEVILLE, NEW JERSEY

Peoples National Bank and Trust Company

Member Federal Deposit Insurance Corporation

Member Federal Reserve System



# JERSEY TELEVISION



## Miss Ruth Eleanor Ford Has Bridal To Walter Anderson

SALE  
SALE  
SALE  
SALE  
SALE  
SALE  
SALE  
SALE  
SALE  
SALE

TWICE A YEAR WE HOLD  
THIS AMAZING SALE!

*Naturalizer*

SEMI-ANNUAL  
SHOE CLEARANCE

**SALE**

OUTSTANDING  
VALUES FROM  
OUR REGULAR  
STOCK

The shoe with the beautiful fit  
... at great savings. A wide  
selection of dressy, casual and  
tailored styles... but not all  
sizes in all styles. A truly  
great sale!

VALUES TO \$15.99 NOW SALE PRICED AT

**\$8<sup>90</sup> \$9<sup>90</sup>**  
AND

**Tannen's** SHOE SHOP  
(JACK & JILL)

PL 9-6548

141 Washington Ave. Belleville Center  
OPEN FRIDAY 'TIL 9 P.M.





PL 9-3200

BUY • SELL • HELP WANTED • EMPLOYMENT • LOST AND FOUND • FOR HIRE • BUY • FOR HIRE •



PL 9-3200

CLASSIFIED ADVERTISING

Adv. will appear in The Nutley Sun and Belleville Times-News  
Over 56,000 Readers  
25 WORDS OR LESS 1.75  
Each Additional Word 8c  
25 WORDS OR LESS THREE TIMES 4.00  
Each Additional Word 16c  
Annual Rate 1.25 Per Week  
Ads Must Be In By 12 Noon Tuesday

AGRICULTURE

SCREENED TOP SOIL - FILL  
Excavating, landscaping, sodding, land clearing. Let us solve your drainage problem. Trencher, bulldozer, and truck rental. Armco, Vocatur, Telephone PL 9-6640. 3-65 58 TF

ALUMINUM SIDING

BEAUTIFY YOUR HOME with aluminum siding; also store fronts and aluminum sills and casing covers. Call KING OF BELLEVILLE, 164 Washington Avenue, Belleville, PL 9-1161. 1-42-61 TF

IPOLLITO CONSTRUCTION

Aluminum siding, awnings, and windows. Also store fronts. Guaranteed work, fair prices. Extra for phone North 7-1344 for free estimates. 4-6-61 TF

AWNINGS

ALUMINUM Awnings, door hoods, patio covers, (stationary or roll-up); sold and installed, also iron railings. Call King of Belleville, 164 Washington Ave., Plymouth 9-1161. 9-28-61 TF

CARPENTERS AND BUILDERS

A. PHILIP Carpenter - Builder Alterations North 7-3851 373 Bloomfield Ave. Nutley 2-26 TF

ALUMINUM REPAIRS

ALUMINUM GLASS and screen repaired, also headquarters for radiator, door closers, window chains, knob sets, grilles, etc. KING OF BELLEVILLE, 164 Washington Ave., Belleville, PL 9-1161. 1-12-61 TF

ALUMINUM WINDOWS

Custom-Made Window Shades Aluminum Products Venetian Blinds Canvas Awnings LePore - Awnings 168 Chestnut St. North 7-431 4-6-61 TF

T. K. OAKS - ALUMINUM COMBINATION

Windows and doors. Free estimates and demonstrations. Also roofing, painting, leaders and gutters. Telephone North 7-2564 before 9:45 A.M. or evenings. 9-13-58 TF

Announcement

ATTENTION! For that new look in clothes, call P. L. A. Z. FRENCH CLEANERS, 250 Centre Street, North 7-2105. Same Day Service. Free Mohairproofing. 4-23-59 TF

AUTO SERVICE

Pay As You Ride MOTOR OVERHAUL \$31.95 New Rings, Gaskets, Clean Carburetor, Refit Road Service Tune Motor, 6 Cylinders, 30 Day Service, 6 Cylinders, 39.95

HYDRAMATIC EXPERTS

Transmission Resealed \$19.35 Bands Adjusted \$2.95 Transmission Overhauled \$47.95 PAINTING, BODY WORK

Any choice of colors: body, fender, work; frames straightened with BEAR precision equipment.

LORIAN'S GARAGE, INC.

73 Washington Ave. Belleville PL 1-2303 2-15-61 TF

AUTO SERVICE

COLLISION SPECIALISTS STRAIGHTENING, PAINTING, lacquering, enamel, buffing, electric welding, chassis work, fine glass work. ALE'S RIVER SIDE BODY & FENDER WORKS, 221 Valley Street, Belleville, PL 9-1162. 12-17-59 TF

SPECIALISTS: IGNITION, MOTOR TUNE-UP, Carburetion, VerStan, 197 Franklin Avenue (near Center) - Distributors for LECTRA Fuel Igniters. Open weekdays 4:30 to 9 P.M., Saturday, 8:30 A.M. to 6 P.M. 9-28-59 TF

SPECIALIZING IN AUTOMATIC TRANSMISSIONS

General auto repairs. Jim Pavia's Auto Service, Corner Stephens & Tarry Sts., Belleville, Plymouth 9-0017. 9-21-61 TF

ALUMINUM Awnings, door hoods, patio covers, (stationary or roll-up); sold and installed, also iron railings. Call King of Belleville, 164 Washington Ave., Plymouth 9-1161. 9-28-61 TF

CARPENTERS AND BUILDERS

A. PHILIP Carpenter - Builder Alterations North 7-3851 373 Bloomfield Ave. Nutley 2-26 TF

ALUMINUM REPAIRS

ALUMINUM GLASS and screen repaired, also headquarters for radiator, door closers, window chains, knob sets, grilles, etc. KING OF BELLEVILLE, 164 Washington Ave., Belleville, PL 9-1161. 1-12-61 TF

ALUMINUM WINDOWS

Custom-Made Window Shades Aluminum Products Venetian Blinds Canvas Awnings LePore - Awnings 168 Chestnut St. North 7-431 4-6-61 TF

T. K. OAKS - ALUMINUM COMBINATION

Windows and doors. Free estimates and demonstrations. Also roofing, painting, leaders and gutters. Telephone North 7-2564 before 9:45 A.M. or evenings. 9-13-58 TF

Announcement

ATTENTION! For that new look in clothes, call P. L. A. Z. FRENCH CLEANERS, 250 Centre Street, North 7-2105. Same Day Service. Free Mohairproofing. 4-23-59 TF

AUTO SERVICE

Pay As You Ride MOTOR OVERHAUL \$31.95 New Rings, Gaskets, Clean Carburetor, Refit Road Service Tune Motor, 6 Cylinders, 30 Day Service, 6 Cylinders, 39.95

HYDRAMATIC EXPERTS

Transmission Resealed \$19.35 Bands Adjusted \$2.95 Transmission Overhauled \$47.95 PAINTING, BODY WORK

Any choice of colors: body, fender, work; frames straightened with BEAR precision equipment.

LORIAN'S GARAGE, INC.

73 Washington Ave. Belleville PL 1-2303 2-15-61 TF

DECORATORS

PAINTERS GUY SYMPER - DECORATOR - Painting, Paperhanging, Reasonable prices. 170 Linden Avenue, Belleville, Call PL 9-0871. 8-11-61 TF

DOES YOUR HOUSE NEED PAINTING?

John Graczyk, General Contractor. Interior and exterior painting. Fully insured. Free Estimates. Telephone NO. 7-4489. 1-30-59 TF

DOM INNAMORATO - PAINTING and Paperhanging. Long experience. Clean, neat work. Estimates given. Pilgrim 3-5154. 12-22-60 TF

PAINTING & DECORATING

Quality work - Reasonable prices. 32 year exp. Fully insured. Only the best materials used. No job too small. Sweeney & Son, Plymouth 9-9885. TF

INTERIOR AND EXTERIOR PAINTING

By a reliable contractor. Ceilings painted. Estimates cheerfully given. Call Mr. Whitaker, 680 Franklin Avenue, North 7-6040. 8-25-60 TF

PAINTING AND PAPERHANGING

Inside and outside work. Carpentry, light plaster and cabinet work—all odd jobs. Call North 7-5519. 11-9-61 TF

SPECIAL - I will hang the paper in any average size room for only \$3.95. D. D'EMILIO, 12 Brown St. Telephone North 7-9325. TF

LAMPS MADE, REPAIRED

Lamps from vases, etc. Table lamps made taller. Lamp parts, shades, bases. Reasonable. Shoppe, 650 Franklin Ave., North 7-6021. 4-6-61 TF

SALE ON SLIPCOVERS

Upholstery and custom made draperies, 8 piece slip cover, carpets, walling. Expert work. Large selection of dress materials, curtains, trimmings. Visit our store - Ridge Park Center, 587 Ridge Road, No. Arlington, WY 1-0087. 9-28-61 TF

BATHROOM - Vanities, formica covered, factory show room discounts, buy direct from manufacturer. Perma Co. 35 Mill St., Belleville, PL 9-2611 TF

SAVE ON FLUORESCENT LIGHTS

Our quantity mail order sales bring lowest prices on Circulines, fixture kits, repairs, parts. Shopette, 650 Franklin Ave., North 7-6021. 4-6-61 TF

USED DESKS, 415 & UP. Flng cabinets, custom furniture warehouse, 200 Montgomery Street, Paterson, N. J. Lambert 3-4131. 5-26-60 TF

REO SNOW BLOWER - 20" path-sled propelled. Electric start. \$175. Call North 7-0906. 1-12-61 TF

ROYAL DOULTON FIGURINES

- La Syphide and Giselle. Your office - considered. Call North 7-1911. 1-12-61 TF

RUGS FOR SALE

9x12 \$12.50 each. Other sizes and colors. Wool runner 50c a foot. Large throw rugs \$1.25 each. Buy direct and save up to 70 percent. Bring ad and receive gift with purchase. Warehouse office, 220 Broad Street, Clifton, NJ 07030. 11-30-61 TF

STORE FOR RENT on Passaic Avenue near Chestnut St.

approx. 700 square feet. Rent \$85 monthly including heat and hot water. HADAMDS - Realtor, North 7-8000. 1-4 TF

2 ROOMS and bath. Heat and hot water. Call North 7-8677. 1-11 TF

AVAILABLE IMMEDIATELY

Four rooms, separate heating unit. Private entrance. \$65 rental. 15 East High Street, Nutley (above Haffner's Garage). Call PRISCILLA 9-9173. 1-21-62 TF

ATTRACTIVE, MODERN 3 1/2 ROOM apartment, 2 family, private entrance. All utilities. \$105. Business couple preferred. Call North 7-2379. 1-11 TF

4 1/2 ROOMS, heat and hot water supplied. First floor. Immediate occupancy. Call after 4 P.M. North 7-2551. 1-11 TF

14 ROOMS, and laboratory, particularly furnished. Convenient. No 22nd and 32nd Streets. 2 adults or working mother and child. Kitchen privileges. Plymouth 9-3922. 1-11 TF

4 ROOMS, private home. Reasonable rent. North 7-8677. 1-11 TF

THREE ROOMS and BATH, on Washington Avenue, Belleville. 2nd floor, front apartment. Heat and hot water supplied. Business woman or couple. Call Plymouth 9-9832 after 2 P.M. Rent \$65. Available immediately. 1-11 TF

MODERN 5 ROOM APARTMENT. Heat, hot water and gas supplied. Call North 7-0730. 1-11 TF

FOR RENT

"Offices for rent. One to four rooms. Can divide to suit. Rent very reasonable. Available January 1, 1962. The Nutley Sun Building. For details call Mrs. Wilkinson, North 7-2100." 1-11 TF

FOR SALE

33-Have your roof, gutters, leaders and flashings inspected. Any small, minor repair included. Aluminum combination windows and doors. General home maintenance. Please call before 9:00 A.M. or after 6 P.M. T. K. Oakes, North 7-2564. 12-22-60 TF

FOR SALE

MATTRESSES - A complete line of name brands, mattresses and box springs. Made to order. Any size. Removing same day service. Maple Furniture, 85 Franklin Avenue, Nutley, North 7-0764. 9 A.M. to 8 P.M. daily - Saturday 9 A.M. to 6 P.M. 5-18-61 TF

AFRICAN VIOLETS - Gift plants \$1.50 - \$2.50. Small plants 50c and 75c. Special rates to clubs and organizations. Doris's African Violet Corner, 308 Franklin Street, Bloomfield. Telephone PL 5-4845. Open Sunday to 5 P.M. 9-14-61 TF

LAMPS MADE, REPAIRED

Lamps from vases, etc. Table lamps made taller. Lamp parts, shades, bases. Reasonable. Shoppe, 650 Franklin Ave., North 7-6021. 4-6-61 TF

SALE ON SLIPCOVERS

Upholstery and custom made draperies, 8 piece slip cover, carpets, walling. Expert work. Large selection of dress materials, curtains, trimmings. Visit our store - Ridge Park Center, 587 Ridge Road, No. Arlington, WY 1-0087. 9-28-61 TF

BATHROOM - Vanities, formica covered, factory show room discounts, buy direct from manufacturer. Perma Co. 35 Mill St., Belleville, PL 9-2611 TF

SAVE ON FLUORESCENT LIGHTS

Our quantity mail order sales bring lowest prices on Circulines, fixture kits, repairs, parts. Shopette, 650 Franklin Ave., North 7-6021. 4-6-61 TF

USED DESKS, 415 & UP. Flng cabinets, custom furniture warehouse, 200 Montgomery Street, Paterson, N. J. Lambert 3-4131. 5-26-60 TF

REO SNOW BLOWER - 20" path-sled propelled. Electric start. \$175. Call North 7-0906. 1-12-61 TF

ROYAL DOULTON FIGURINES

- La Syphide and Giselle. Your office - considered. Call North 7-1911. 1-12-61 TF

RUGS FOR SALE

9x12 \$12.50 each. Other sizes and colors. Wool runner 50c a foot. Large throw rugs \$1.25 each. Buy direct and save up to 70 percent. Bring ad and receive gift with purchase. Warehouse office, 220 Broad Street, Clifton, NJ 07030. 11-30-61 TF

STORE FOR RENT on Passaic Avenue near Chestnut St.

approx. 700 square feet. Rent \$85 monthly including heat and hot water. HADAMDS - Realtor, North 7-8000. 1-4 TF

2 ROOMS and bath. Heat and hot water. Call North 7-8677. 1-11 TF

AVAILABLE IMMEDIATELY

Four rooms, separate heating unit. Private entrance. \$65 rental. 15 East High Street, Nutley (above Haffner's Garage). Call PRISCILLA 9-9173. 1-21-62 TF

ATTRACTIVE, MODERN 3 1/2 ROOM apartment, 2 family, private entrance. All utilities. \$105. Business couple preferred. Call North 7-2379. 1-11 TF

4 1/2 ROOMS, heat and hot water supplied. First floor. Immediate occupancy. Call after 4 P.M. North 7-2551. 1-11 TF

14 ROOMS, and laboratory, particularly furnished. Convenient. No 22nd and 32nd Streets. 2 adults or working mother and child. Kitchen privileges. Plymouth 9-3922. 1-11 TF

4 ROOMS, private home. Reasonable rent. North 7-8677. 1-11 TF

THREE ROOMS and BATH, on Washington Avenue, Belleville. 2nd floor, front apartment. Heat and hot water supplied. Business woman or couple. Call Plymouth 9-9832 after 2 P.M. Rent \$65. Available immediately. 1-11 TF

MODERN 5 ROOM APARTMENT. Heat, hot water and gas supplied. Call North 7-0730. 1-11 TF

FOR RENT

"Offices for rent. One to four rooms. Can divide to suit. Rent very reasonable. Available January 1, 1962. The Nutley Sun Building. For details call Mrs. Wilkinson, North 7-2100." 1-11 TF

FOR SALE

33-Have your roof, gutters, leaders and flashings inspected. Any small, minor repair included. Aluminum combination windows and doors. General home maintenance. Please call before 9:00 A.M. or after 6 P.M. T. K. Oakes, North 7-2564. 12-22-60 TF

FOR SALE

MATTRESSES - A complete line of name brands, mattresses and box springs. Made to order. Any size. Removing same day service. Maple Furniture, 85 Franklin Avenue, Nutley, North 7-0764. 9 A.M. to 8 P.M. daily - Saturday 9 A.M. to 6 P.M. 5-18-61 TF

AFRICAN VIOLETS - Gift plants \$1.50 - \$2.50. Small plants 50c and 75c. Special rates to clubs and organizations. Doris's African Violet Corner, 308 Franklin Street, Bloomfield. Telephone PL 5-4845. Open Sunday to 5 P.M. 9-14-61 TF

LAMPS MADE, REPAIRED

Lamps from vases, etc. Table lamps made taller. Lamp parts, shades, bases. Reasonable. Shoppe, 650 Franklin Ave., North 7-6021. 4-6-61 TF

SALE ON SLIPCOVERS

Upholstery and custom made draperies, 8 piece slip cover, carpets, walling. Expert work. Large selection of dress materials, curtains, trimmings. Visit our store - Ridge Park Center, 587 Ridge Road, No. Arlington, WY 1-0087. 9-28-61 TF

BATHROOM - Vanities, formica covered, factory show room discounts, buy direct from manufacturer. Perma Co. 35 Mill St., Belleville, PL 9-2611 TF

SAVE ON FLUORESCENT LIGHTS

Our quantity mail order sales bring lowest prices on Circulines, fixture kits, repairs, parts. Shopette, 650 Franklin Ave., North 7-6021. 4-6-61 TF

USED DESKS, 415 & UP. Flng cabinets, custom furniture warehouse, 200 Montgomery Street, Paterson, N. J. Lambert 3-4131. 5-26-60 TF

REO SNOW BLOWER - 20" path-sled propelled. Electric start. \$175. Call North 7-0906. 1-12-61 TF

ROYAL DOULTON FIGURINES

- La Syphide and Giselle. Your office - considered. Call North 7-1911. 1-12-61 TF

RUGS FOR SALE

9x12 \$12.50 each. Other sizes and colors. Wool runner 50c a foot. Large throw rugs \$1.25 each. Buy direct and save up to 70 percent. Bring ad and receive gift with purchase. Warehouse office, 220 Broad Street, Clifton, NJ 07030. 11-30-61 TF

STORE FOR RENT on Passaic Avenue near Chestnut St.

approx. 700 square feet. Rent \$85 monthly including heat and hot water. HADAMDS - Realtor, North 7-8000. 1-4 TF

2 ROOMS and bath. Heat and hot water. Call North 7-8677. 1-11 TF

AVAILABLE IMMEDIATELY

Four rooms, separate heating unit. Private entrance. \$65 rental. 15 East High Street, Nutley (above Haffner's Garage). Call PRISCILLA 9-9173. 1-21-62 TF

ATTRACTIVE, MODERN 3 1/2 ROOM apartment, 2 family, private entrance. All utilities. \$105. Business couple preferred. Call North 7-2379. 1-11 TF

4 1/2 ROOMS, heat and hot water supplied. First floor. Immediate occupancy. Call after 4 P.M. North 7-2551. 1-11 TF

14 ROOMS, and laboratory, particularly furnished. Convenient. No 22nd and 32nd Streets. 2 adults or working mother and child. Kitchen privileges. Plymouth 9-3922. 1-11 TF

4 ROOMS, private home. Reasonable rent. North 7-8677. 1-11 TF

THREE ROOMS and BATH, on Washington Avenue, Belleville. 2nd floor, front apartment. Heat and hot water supplied. Business woman or couple. Call Plymouth 9-9832 after 2 P.M. Rent \$65. Available immediately. 1-11 TF

MODERN 5 ROOM APARTMENT. Heat, hot water and gas supplied. Call North 7-0730. 1-11 TF

GUTTERS

LEADERS HAVE YOU CHECKED YOUR GUTTERS and leaders lately? Let us do it for you. Aluminum leaders and gutters sold and installed by KING OF BELLEVILLE, 164 Washington Avenue, Plymouth 9-1161. 1-19-61 TF

HEARING AIDS

SOUTH BERGEN HEARING AID CENTER Little's Pharmacy 547 Franklin Avenue 144 Washington Avenue, North 7-0822 Hearing Aids 9-1042 9-28-61 TF

HELP WANTED

LADY DESIRED as companion & light housekeeping. Person on Social Security acceptable. Good home in preference to high wages. Call Plymouth 9-9398. 1-11 TF

EXPERIENCED TELEPHONE OPERATOR

middle-aged. Evening hours - every other night - 10:30 P.M. to 8:30 A.M. Apply Physician's Exchange, 533 Franklin Avenue, Nutley, North 7-4548. 1-11 TF

PAY CHRISTMAS BILLS

Money unlimited! AVOID COSTS! METICS offers opportunity to make to \$10 a day. No experience necessary. Earnings start at \$100. Call Mr. Ford, MI 2-146 for appointment. 1-11 TF

HOUSEWORKER - mother teaching school requires help from 1 P.M. to 5 P.M. Mondays through Fridays. References required. Phone North 7-3551 after 5 P.M. 1-11 TF

BEAUTICIAN, EXPERIENCED

Regular hours. Marie's Beauty Shop, 185 High Street, Nutley, North 7-4867. 1-11 TF

LANE EMPLOYMENT AGENCY

Bookkeepers to \$100 Asst. Bookkeepers to 75 Clerk - Typists to 75 Secretaries, Jr. & Sr. to 80 Switchboard 4-6-61 TF

PLASTERING AND PATCHING

Cement work. No job too small. Forty years experience. J. Zeiss Telephone Plymouth 9-7435. 7-11-57 TF

FRANK D'ARCO MASON CONTRACTOR

A complete line of mason work. Brick Stoops, patios, etc. All work guaranteed. 415 Jovell St. Phone PL 9-0952 PL 9-8174. 7-17-58 TF

SAM YASSO - General cement contractor. Garages, porches, steps, patios. Retaining walls, guaranteed for one year. No job too small. Free estimates given now for Spring work. North 7-2517 between 7:30 A.M. and 8 A.M. and afterwards 1:30 P.M. to 2:30 P.M. 3-1 TF

MOVING

JOE RAASER, Moving and Storage, Warehouse, 148 St. Belleville, Telephone Plymouth 9-1822. 7-23-53 TF

PLUMBING - Siding

Windheim Plumbing & Heating Co. Gas Heat and Oil Heat 418 Franklin Ave. North 7-6008 TF

JAEGER & SON PLUMBING HEATING

Electric Sewer Cleaning 24 Hour Service 170 Park St. North 7-1594 8-4-60 TF

GAS HEAT INSTALLED - Heating repairs. Conversion burners. Free estimates. Call North 7-3375 V. Shannon. 8 Evelyn Place, Nutley 2-16-61 TF

PLUMBING - Siding

JOHN M. MCUGH PLUMBING HEATING CONTRACTOR Gas Heating Repairs - New Work Alterations 97 Dow Street, Belleville, Telephone Plymouth 1-1092 11-30-61 TF

ROOFING AND SIDING

HAROLD HARRISON & SON - Roofing. All work guaranteed. Slate repairs



**TREE SERVICE**  
WEISCHEN'S TREE SERVICE, INC. Insured. Telephone NO 7-0965. 6:11-9:15 TF

**UPHOLSTERY**  
SLIP COVERS AND UPHOLSTERY, custom work at lowest prices. "The Little Shop with the Big Values." Czech Decorators, 196 Mill St., Belleville, Plymouth 4-2301. 10-5-91 TF

**SLIP COVERS** — reupholstery, new upholstered pieces of any workmanship, wide variety of samples. Nicholas Spirk, 421 Franklin Avenue, Telephone North 7-2529. TF

**KITCHEN AND DINETTE SETS REUPHOLSTERED** in modern plastic, classic patterns. Jerry Alotte, Telephone North 7-0440. 1-23-58 TF

**WANTED TO BUY**

**CLEAN WHITE RAGS.** Large pieces, no buttons or other fasteners. 30 cents per pound. Bring to The Nutter Sun, 306 Franklin Avenue, Mondays or Thursdays only. TF

**DO YOU HAVE** old gold jewelry you no longer use? We buy gold, platinum, diamonds, dental bridgework, etc. Lane Jewelers (at the Center), North 7-4466. 4-23-58 TF

**WANTED TO RENT**

**ROOMS—FOR DEALERS ATTENDING SALES CONVENTION, IN NUTLEY JANUARY 4-11, 1962. CALL NORTH 7-5901. 12-14-61TF**

**WORK WANTED**

**IMPROVE YOUR PROPERTY** New sidewalks and repairing. New lawns and repair. All labor work and trucking. V. Sampaio, 70 Garner Avenue, Belleville, N. J. Telephone, Plymouth 4-5859. TF

**NEVINS TRUCKING** — General cleaning and rubbish removal. Small moving jobs. Dump truck for hire. Telephone Plymouth 4-4778. 3-23-61 TF

**ODD JOB SERVICE.** Cellars, attics and yards cleaned. Junk and rubbish removed. Telephone Pilgrim 4-3264. 3-12-59 TF

**SNOW REMOVING** by machines. Fast, efficient service. Reasonable prices. Also light hauling and odd jobs. For estimates, phone North 7-3961, any time. 1-11

**YOUNG MOTHER** wishes sewing and alteration work in her own home. Call North 1-0899.

## Christmas In Hospital An Experience In Compassion

The Christmas season is the epitome of the concept underlying medical and hospital care—the great humanitarian spirit, the selflessness, the tenderness of thought and action, the annual renewal of man's belief in brotherhood and the goodness of his fellow men and in doing for others.

It is difficult to describe Christmas in a hospital. How does one put on paper the emotional experiences, the little pleasantries, the human tragedy and the profound sense of compassion that only a hospital can experience during the Christmas season? Moreover, how do you put loneliness into words?

By Christmas Eve, all of the patients at Clara Maass Memorial Hospital, Belleville, who were well enough to leave, had departed for their homes. Only those who were seriously ill or disabled or whose recovery had not progressed far enough remained.

For those who stayed on, the hospital personnel did everything they could to make the day as merry as possible. On Christmas morning, the director and assistant director of the hospital together with their wives served coffee and pastry in the main lobby to members of the hospital family and visitors. At mid-day a delicious dinner was served with the patients having a choice of turkey or roast-mutton soup, along with all the traditional Christmas trimmings. Tray favors made by one of the hospital volunteers, were distributed as usual.

While miracles of life and death are occurring throughout the year at Clara Maass Memorial and other hospitals, they take on a special significance during Christmas. What could be more tragic or more soul-searing than the loss of a loved one on Christmas Eve? On the other hand, what could be more delightful or more hopeful for the future than a baby born on Christmas Day like the Christ Child nearly 20 centuries ago. Such was the moral Christmas morning when the wife of one of the maintenance staff of the hospital gave



## Local Girl Leads Talk At CP Unit

A pilot program for student nurses to supplement their training in the care of physically handicapped children was launched yesterday, Jan. 3, at the Cerebral Palsy School and Treatment Center, Belleville. Miss Joan Ferri, of 15 San Antonio Avenue, Nutley, Center staff member, led a discussion of occupational therapy as part of a day-long orientation session for seven Senior students at Clara Maass Hospital, Belleville.

Highlight of the two-month program will be the assignment of each student nurse to a particular child to get a complete picture of the youngster's total needs. The student will arrange her schedule to include observation of the child in the classroom and in therapy, keeping a log to record progress.

To acquaint the student nurse with the whole child, family background will be emphasized through visits to the home with the Visiting Nurse Association.

At yesterday's orientation meeting, the specialists at the Center described their own areas of treatment. Later, each student was assigned to a child and she followed the youngster's afternoon routine at the Center.

## Almanac Sees Blizzard

For the early part of January, snow and "an old-fashioned blizzard" are seen by The Old Farmer's Almanac.

It happens or happened this week:

Today, Thursday—L. Braille born, 1809.

Friday, Jan. 5 — The first of a three-day "unlucky days" period; 12th night—take down Christmas greens. Those who participated in The Spas Home decorations contest are asked to NOT disturb their displays for another three days at least.

**"SEARCH FOR PARADISE" LOCAL IN HEADLINES.**

The January issue of Readers' Digest contains an article called "Struggle for the Himalayas." The daily newspapers report trouble between India and Red China. Separating these two nations are smaller nations grouped in the Himalaya Mountains.

The Lowell Thomas production, "Search For Paradise," current Cinerama hit at the Claridge Theatre, Montclair, shows the nations of the Himalayas in such fashion that people interested in the current problems affecting that area get a being-on-the-spot reaction to the people and places.

Students of current events are making the Claridge Theatre a source of information in exploring the headlined region.

## OUR CLASSIFIEDS BRING QUICK RESULTS



**WEEK END SPECIAL**  
**'59 BUICK \$1695**  
Le Sabre, 4 dr. H.T., R. & H., Dynaflo, power steering, & brakes. Like new.

**'60 BUICK \$2195.**  
Le Sabre, 2 dr. H.T., R. & H., Dynaflo, P.S. and brakes, extra sharp.

**'59 OLDS \$1595.**  
Dynamic 88, 4 dr., R. & H., Hydramatic, P.S. & brakes, new car trade.

**'58 BUICK \$1395.**  
Roadmaster convertible, R. & H., Dynaflo, full power. New top, exceptional cond. Must be seen.

**'60 OPEL \$1295.**  
Station wagon, R. & H., real economy, extra clean.

**'58 OLDS \$1195.**  
"88", 4 dr., R. & H., Hydramatic, P.S. & brakes.

**'57 BUICK \$695.**  
Special 4 dr. H.T., R. & H., Dynaflo, one owner, new car trade.

**'57 MERCURY \$745.**  
Monterey, 4 dr. H.T., R. & H., Mercromatic, power steering, clean.

**'58 EDSEL \$695.**  
Ranger, convert. R. & H., Push Button auto. drive, P.S., sharp.

**'57 PONTIAC \$695.**  
Chieftain, 4 dr., Hydra., truly outstanding cond.

**'56 FORD \$695.**  
4 dr., 6 pass., country sedan wagon, V-8, radio, heater, p. steering, extra clean.

**'57 FORD \$645.**  
Fairlane 500 2 dr. H. T., R. & H., Automatic, Exceptionally Clean.

**'57 BUICK \$595.**  
Special, 4 dr. H.T., R. & H., Dynaflo.

**'56 BUICK \$595.**  
Special, 4 dr. H.T., R. & H., Dynaflo, power steering & brakes, sale priced.

**'55 BUICK \$495.**  
Roadmaster convertible, R. & H., Dyna. Full power very clean.

**'56 BUICK \$395.**  
Roadmaster, convertible, R. & H., Dynaflo, full power. As is.

**Belleville - Nutley / BUICK CO.**  
• BUICK • OPEL • OLDS • LINCOLN  
66 WASHINGTON AVE.  
NUTLEY NO 7-0500

## Regulations Tightened On Third, Fourth Class Mail

Postmaster L. A. Reilly of New York City released the following information regarding third and fourth class mail.

"Important changes in the procedures for handling undeliverable third and fourth class mail became effective Jan. 10."

"The use of Form 3547, 'Notice to Sender of Addressee's New Address,' will be discontinued."

"The pledge, by mailer, 'Forwarding Postage Guaranteed,' will be discontinued."

"The local transfer and out-of-town forwarding of circulars and similar mailing pieces will be discontinued."

"The endorsement, 'Return Requested,' is to be used on third and fourth class mail which the sender desires to have returned if undeliverable. Such returned mail will be marked by the Post Office to show the new address of the addressee, or the reason for non-delivery if the new address is not known."

"Undeliverable third and fourth class mail returned to the sender will be charged at eight cents per piece or the applicable single

piece rate, whichever is higher. "Mailers should immediately cease printing the obsolete legends 'Forwarding Postage Guaranteed,' 'Return Postage Guaranteed,' and 'Form 3547. Replaces endorsed 'Return Postage Guaranteed' on materials produced after Jan. 9."

"Commencing Jan. 10, mail undeliverable as address' will be handled as prescribed by the new regulations. Effective that day, 'Return Postage Guaranteed' and 'Form 3547' requested, will be handled in the same manner as if they were payment of the charge of eight cents each."

**OLYMPIC BOWL** NOW OPEN  
NEW MODERN BILLIARD ROOM  
Always Open Bowling At Olympic  
BRING THE FAMILY FOR THE EVENING

679 Washington Ave., Belleville Phone PL 1-2111

"However, mailers need not scrap or reprocess mailing pieces already processed. Post Offices will continue to accept such pieces as long as the supplies last, even though no Form 3547 will be issued by Post Offices after Jan. 9."

"The eight-cent charge shall be collected after midnight Jan. 9. Forms 3547 issued prior to the Bureau of Operations, Post Office Department, Washington 25, Jan. 10 will be delivered upon 'D. C.'"

"Third-class mailers who will experience hardship at the new rates because they have mailing pieces which were prepared with the former legends prior to Jan. 10, should write directly to the Bureau of Operations, Post Office Department, Washington 25, Jan. 10 will be delivered upon 'D. C.'"

No matter what you've been offered

**LEARNARD CHEVROLET**  
WILL BETTER THE DEAL!  
SEE US TODAY

514 Washington Ave., BELLEVILLE  
Open Evenings, Wed. 'til 6. Closed Sundays—PL 9-4200



MOTT'S A.M. & P.M.

**Drinks**

LIBBY TOMATO

**Juice**

EHLERS

**Coffee**

**Ideal Coffee**

**Princess Margarine**

**Apple Juice**

**Bartlett Pears**

**Swift'ning Shortening**

**Green Split Peas**

**Veryfine Apple Sauce**

**Dash Detergent**

**Brillo Soap Pads**

**Pard Dog Food**

**Good Luck Margarine**

32 oz. 59c

46 oz. 1.00

5c Off Label 1 lb. can 59c

Vacuum Pack 1 lb. can 57c

Solid 1 lb. pkg. 15c

Red Cheek 5 32 oz. 1.00

Ideal — Halves 3 29 oz. 1.00

3 lb. can 69c

2 16 oz. 21c

16 oz. can 10c

9 lb. 1.99

13 oz. 1.00

3 giant 1.00

6 16 oz. 89c

4 1 lb. 1.00

2c Off Label 4 1 lb. 1.00

5 1/2 oz. pkg. 69c

3 giant 1.00

6 16 oz. 89c

4 1 lb. 1.00

2c Off Label 4 1 lb. 1.00

5 1/2 oz. pkg. 69c

3 giant 1.00

6 16 oz. 89c

4 1 lb. 1.00

2c Off Label 4 1 lb. 1.00

5 1/2 oz. pkg. 69c

3 giant 1.00

6 16 oz. 89c

4 1 lb. 1.00

2c Off Label 4 1 lb. 1.00

5 1/2 oz. pkg. 69c

3 giant 1.00

6 16 oz. 89c

4 1 lb. 1.00

2c Off Label 4 1 lb. 1.00

5 1/2 oz. pkg. 69c

3 giant 1.00

6 16 oz. 89c

4 1 lb. 1.00

2c Off Label 4 1 lb. 1.00

5 1/2 oz. pkg. 69c

3 giant 1.00

6 16 oz. 89c

4 1 lb. 1.00

2c Off Label 4 1 lb. 1.00



LANCASTER BRAND  
TOP QUALITY

**STEAKS**

SIRLOIN PORTERHOUSE

lb. 79c lb. 89c

LANCASTER BRAND BONELESS BOTTOM

**Round Roast 79c**

Round Roast 89c

Eye Round 1.09

Round Steak 99c

Sausage Meat 1 lb. pkg. 49c

Bacon 49c

Beef Liver 49c

Freeze Shred 1 lb. pkg. 49c

Large Cut Up 39c

Fowl 39c

Freeze Shred 1 lb. pkg. 49c

Beef Liver 49c

Freeze Shred 1 lb. pkg. 49c

Large Cut Up 39c

Fowl 39c

Freeze Shred 1 lb. pkg. 49c

Beef Liver 49c

Freeze Shred 1 lb. pkg. 49c

Large Cut Up 39c

Fowl 39c

Freeze Shred 1 lb. pkg. 49c

Beef Liver 49c

Freeze Shred 1 lb. pkg. 49c

Large Cut Up 39c

Fowl 39c

Freeze Shred 1 lb. pkg. 49c

Beef Liver 49c

Freeze Shred 1 lb. pkg. 49c

Large Cut Up 39c

Fowl 39c

Freeze Shred 1 lb. pkg. 49c

Beef Liver 49c

Freeze Shred 1 lb. pkg. 49c

Large Cut Up 39c

Fowl 39c

Freeze Shred 1 lb. pkg. 49c

Beef Liver 49c

Freeze Shred 1 lb. pkg. 49c

Large Cut Up 39c

Fowl 39c

Freeze Shred 1 lb. pkg. 49c

Beef Liver 49c

Freeze Shred 1 lb. pkg. 49c

Large Cut Up 39c

Fowl 39c

Freeze Shred 1 lb. pkg. 49c

Beef Liver 49c

Freeze Shred 1 lb. pkg. 49c

Large Cut Up 39c

Fowl 39c

Freeze Shred 1 lb. pkg. 49c

Beef Liver 49c

Freeze Shred 1 lb. pkg. 49c

Large Cut Up 39c

Fowl 39c

Freeze Shred 1 lb. pkg. 49c

Beef Liver 49c

Freeze Shred 1 lb. pkg. 49c

Large Cut Up 39c

Fowl 39c

Freeze Shred 1 lb. pkg. 49c

Beef Liver 49c

Freeze Shred 1 lb. pkg. 49c

Large Cut Up 39c

Fowl 39c

Freeze Shred 1 lb. pkg. 49c

Beef Liver 49c

Freeze Shred 1 lb. pkg. 49c

Large Cut Up 39c

Fowl 39c

Freeze Shred 1 lb. pkg. 49c

Beef Liver 49c

Freeze Shred 1 lb. pkg. 49c

Large Cut Up 39c

Fowl 39c

Freeze Shred 1 lb. pkg. 49c

Beef Liver 49c

Freeze Shred 1 lb. pkg. 49c

Large Cut Up 39c

Fowl 39c

Freeze Shred 1 lb. pkg. 49c

Beef Liver 49c

Freeze Shred 1 lb. pkg. 49c

Large Cut Up 39c

Fowl 39c

Freeze Shred 1 lb. pkg. 49c

Beef Liver 49c

Freeze Shred 1 lb. pkg. 49c

Large Cut Up 39c

Fowl 39c

Freeze Shred 1 lb. pkg. 49c

Beef Liver 49c

Freeze Shred 1 lb. pkg. 49c

Large Cut Up 39c

Fowl 39c

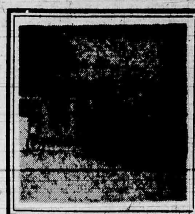
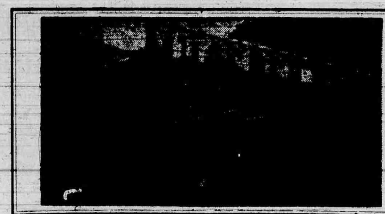
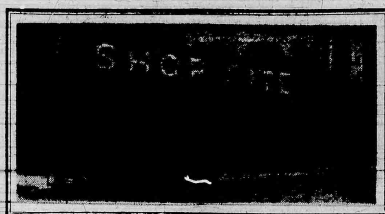
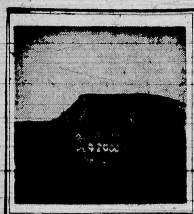
Freeze Shred 1 lb. pkg. 49c

Beef Liver 49c

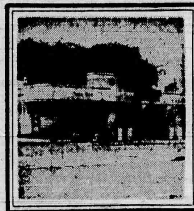
Freeze Shred 1 lb. pkg. 49c

Large Cut Up 39c

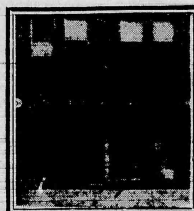




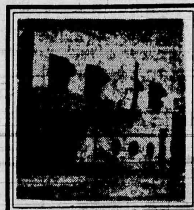
The Boston Store  
538-540 Washington Ave.



Vee Bee Esso  
Franklin Ave. cor. Jorammon



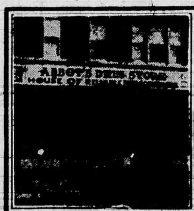
The Crescent Press  
126 Washington Ave.



Christian's Restaurant  
701 Washington Ave.



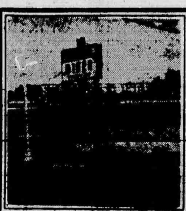
Belleville Times-News  
246 Washington Ave.



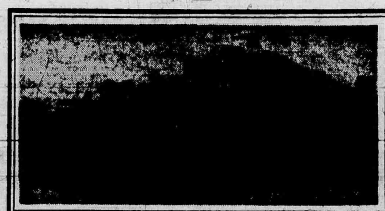
Abbott's Drug Store  
631 Washington Ave.



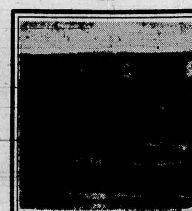
Mary's Alteration Shop  
253 Washington Ave.



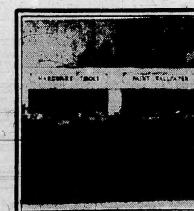
Stefano's Diner  
Park Ave. & River Rd., Nudley



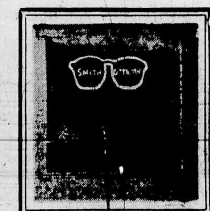
De Witt Savings & Loan  
463 Washington Ave.



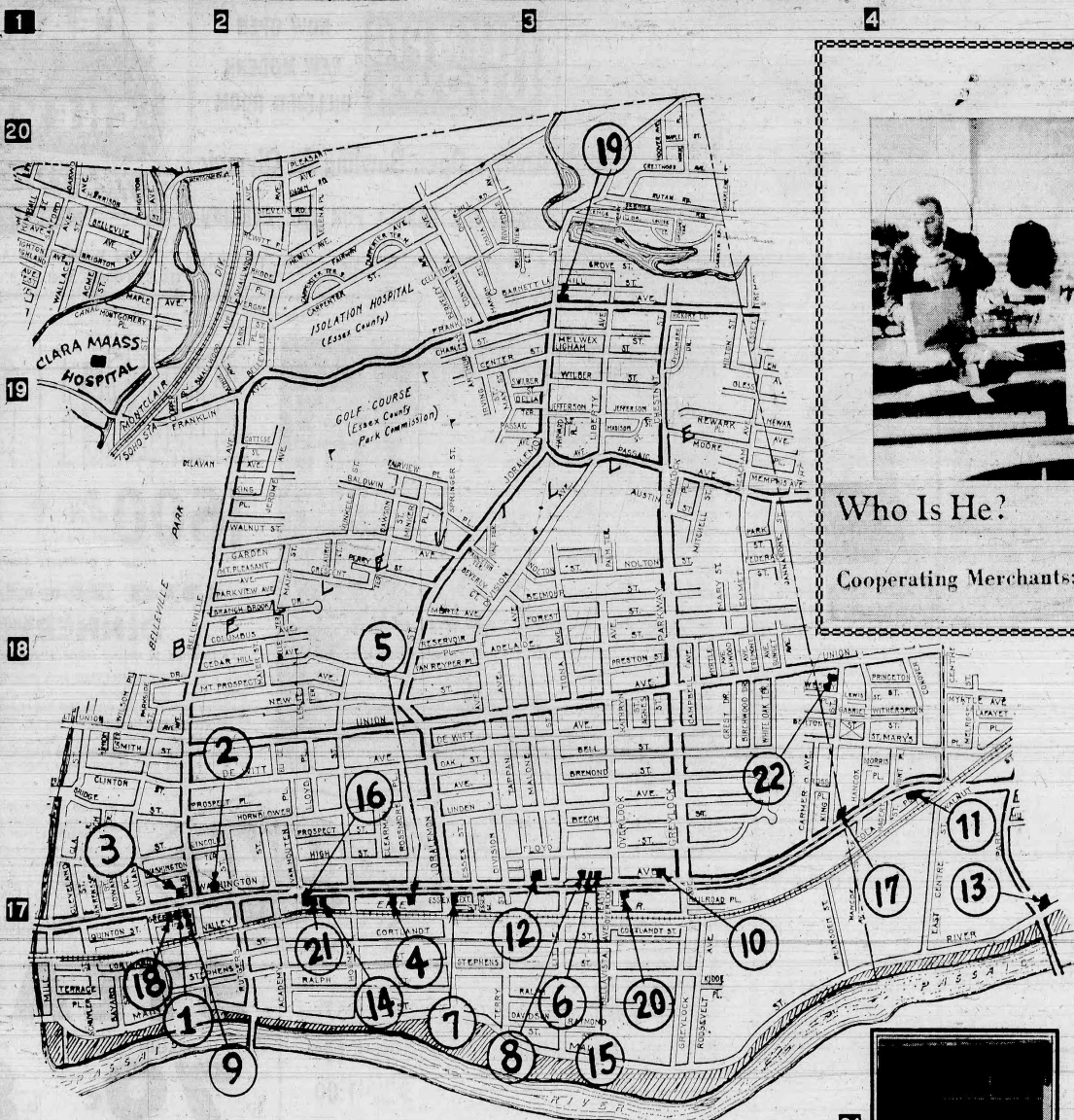
Belleville-Nutley Buick  
86 Washington Ave.



The Glass Co.  
885 Washington Ave.

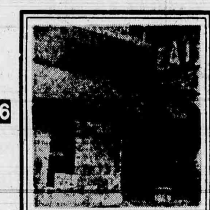


Wm. C. Smith, Optician  
146 Washington Ave.

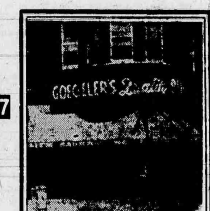


Who Is He? Where Is He?

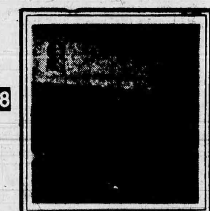
Cooperating Merchants: Royal Shop-Rite  
Belleville Cab



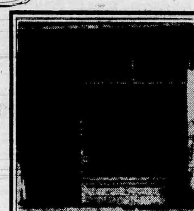
John's Restaurant  
529 Washington Ave.



Goeckeler's Quality Bakery  
Washington Ave. cor. Jorammon



Mead-Ford  
218 Washington Ave.



Belleville Travel Service  
246 Washington Ave.



Zinicola's Bakery  
King St. at Union Ave., Nudley

Alterations	14-MARY'S ALTERATION SHOP	Newspaper	16-BELLEVILLE TIMES-NEWS
Automobiles	11-BELLEVILLE-NUTLEY BUICK	Optician	9-WILLIAM C. SMITH
	8-MEAD-FORD	Restaurant	17-CHRISTIAN'S RESTAURANT
Bakery	7-GOECKELER'S QUALITY BAKERY		6-JOHN'S RESTAURANT
	22-ZINICOLA'S BAKERY	Savings & Loan Assn.	12-DE WITT SAVINGS & LOAN
Diner	13-STEFANO'S DINER	Service Stations	19-VEE BEE ESSO
Department Stores	20-THE BOSTON STORE	Stationers	18-THE CRESCENT PRESS
Drugs	15-ABBOTT'S DRUG STORE	Taxi Cab	1-BELLEVILLE CAB
Food	3-ROYAL SHOP-RITE	Towing Service	5-JANNARONE'S SHELL STATION
Footwear - Men's - Women's	21-BELLEVILLE TRAVEL SERVICE		
Music	4-MUSCARA MUSIC CO.	Wallpaper - Paints - Glass	10-THE GLASS CO.